

# Essential Information

## Please call us to check availability and discuss the details of your visit

- All school groups must book in advance to qualify for the special education rates
- Sessions are suitable for around 30 pupils but we can accommodate larger groups
- A £25 non-refundable deposit is required to confirm all bookings
- There is a minimum charge of £40 for all workshops and talks and £25 for independent visits
- We offer a free preliminary visit, which is recommended for all teachers
- Norton Priory is a safe place to visit and all of our workshops are risk assessed. However, we recommend schools undertake their own risk assessments.

We recommend the following supervision ratios of adults to children: **KS3+ 1:15**

*Please note 1 adult is admitted free of charge for every six children for all age groups.*

**Teachers and helpers must supervise children at all times during the visit and we reserve the right to refuse admission to groups without adequate supervision.**

**We are committed to improving our services for schools and will ask you to give us feedback on your visit. You can find out more about this on**

Entry plus one workshop  
**£3 per pupil**  
Additional sessions  
**£2 per pupil**

# Norton Priory Museum & Gardens Secondary Schools 2011



**Norton Priory is the ideal place for an inspirational education visit, with an award winning museum, medieval ruins and a lovely Walled Garden.**



We offer a range of indoor and outdoor activities independent visits, self-led options and workshops for secondary schools. We can also tailor sessions to suit your needs.

- Workshops are led by Norton Priory staff and last 1 hr & 15 mins
- Introductory tour is available instead of a workshop
- As well as your workshop, you can explore the museum and extensive grounds
- Available resources for Self-Led options:
  - Museum and Walled Garden guide
  - History Trail for Key Stage 3

**For more info on school sessions, learning objectives or for FREE resources - log on to [www.nortonpriory.org/learn](http://www.nortonpriory.org/learn)**

For information or to book please contact:

**The Learning Team,**

Norton Priory Museum & Gardens,  
Tudor Road, Runcorn, Cheshire, WA7 1SX

Tel: 01928 569895 [education@nortonpriory.org](mailto:education@nortonpriory.org)



**Registered Charity No. 504870,  
Supported by Halton Borough Council  
Awarded the Sandford Award for Heritage**



# History Workshops

## Canons & Kings

Step back to Medieval times and explore daily life in the Priory and how the Church affected daily life. Then move on to Henry VIII and the Dissolution of the Monasteries at Norton Priory.

Teachers can tailor make a session, choosing from different themes including; costume, working life, food, leisure and the Dissolution at Norton Priory. Choose from one or two sessions.

## 19th Century Change

This interactive session explores how life changed at Norton Priory and in the surrounding area during the 19th Century.

Explore how industrialisation changed the landscape and daily life and how social class affected everything - from clothing to leisure.

## Introductory tour 'Priory: Past & Present'

An introductory tour looking at the broad sweep of history at Norton Priory.



## Halton Castle

Small group tours of Halton Castle, looking at the historical background and location of the Castle are available on request.

## History Trail

A free History Trail, suitable for Key Stage 3, is available.

The trail covers various parts of the site and different periods in history. The trail can be tailored to suit your curriculum and an answer sheet is available on request.

Please contact the Learning Team for more details.

*Norton Priory can also photocopy the trail for your students at a cost of 30p per copy.*

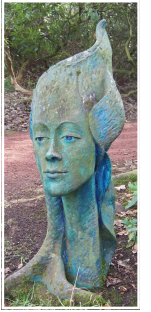
## Art Workshops

### Sensational Sculpture

Tour the sculpture trail looking at artistic inspiration and use of materials.

### Talking Tiles

Uncover Norton Priory's tiles and have a go at making your own.



## Traditional buildings & construction skills

Learn about different types of historic buildings and **have a go** at traditional building skills.

**This full day workshop lasts four and a half hours (inc. lunch break) and costs £6 per pupil.**

Students will:

- Look at different types of building and decoration at Norton Priory
- Explore tile making and make a tile
- Have a go at Cob building
- Experiment with dry stone walling
- Use a self led trail to find out more

## Independent Visits

**Many teachers use the Norton Priory site to teach a variety of subjects including Drama, Science, Geography, Art, Modern Foreign Languages and of course History.**

If you would like to discuss ways of using the site with your students, please feel free to call the Learning team.

We can provide a range of information for you to use in planning your independent visit - have a look at our website for our downloadable guides or for more information about the site.